

Fag I

# CARMINA BURANA

3/6 Pesante  $\text{♩} = 60$

*poco string.*

Carl Orff  
3/8  $\text{♩} = 120-132$

1.

ff *pp*

1

2 4

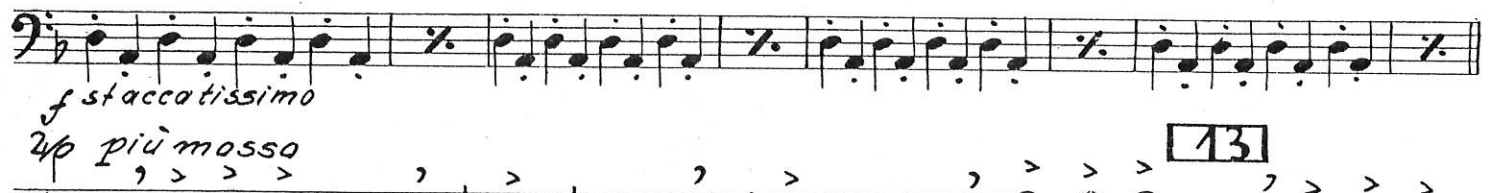
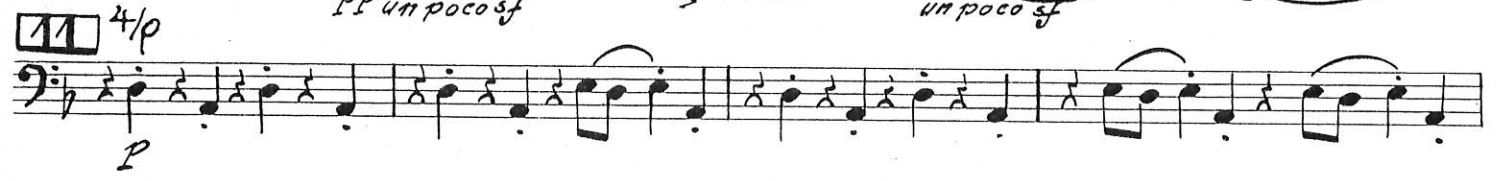
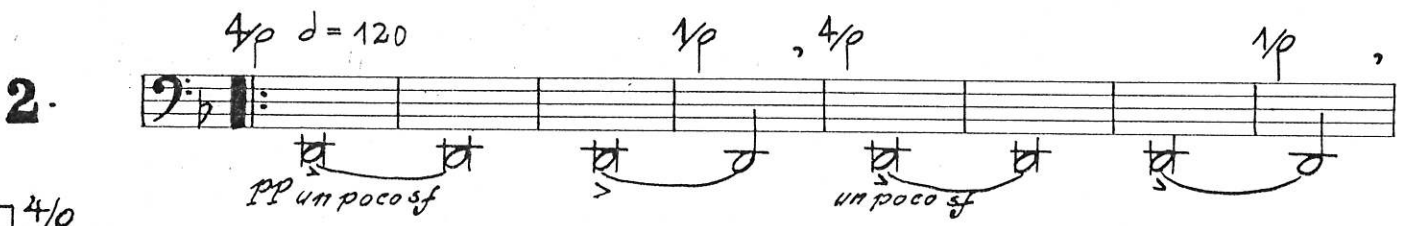
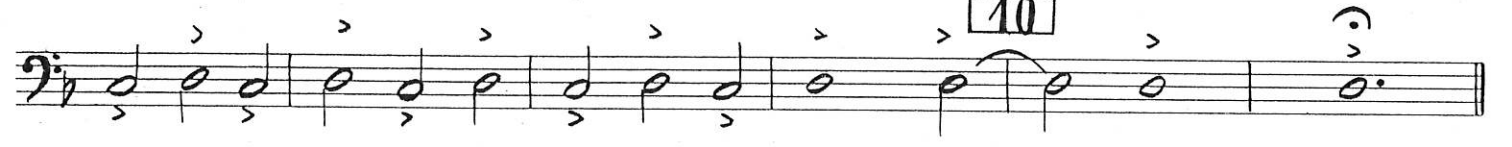
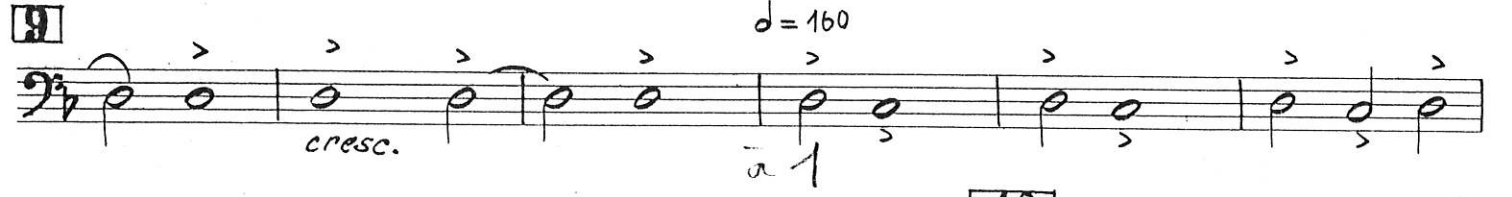
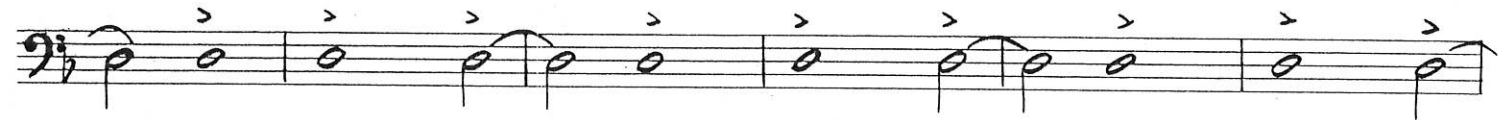
3 4 *pp* (bei Wdhlg.)

5

6 7 *pp*  $\text{♩} > 144$  (bei Wdhlg.) *f*

8 *ff*

Fagotto I



I

3. 4. Tacet

B. S. S. 34988

Fagotto I  
Con ampiezza quasi allegretto

4/4

4p

5.

24

p

2p allegro molto

d = 132

2.5

26

poco rit.

al tempo d = 144

27

compresa 4p d = 132  
ma un poco accelerato

come prima

28

2p d = 144

29

poco rit. al tempo d = 152

30

31

ancora piu presto d'prima 4p d = 144

32

come prima

2p d = 152

33

Fagotto I

1 1 34 1

poco rit. Presto  $\text{♩} = 160$

35

*ff*

6. 39

Tacet Fl. I

42

tacet bis 4 Corni (fa)

43

4/4 più mosso

44

3/4 poco rit. a tempo

*ff* *attacca*

21. TACET

8 Allegro molto  $\text{♩} = 138$  Fagotto I

10. 79

4/4 a 4

80

poco ritenuto a tempo

81

stent. allegro molto